



# DSE-Mobile User Guide

## Table of Contents

1.	Introduction .....	3
1.1.	Features .....	3
2.	Getting Started.....	4
2.1.	Accessibility of DSE-Mobile.....	4
2.2.	Install DSE-Mobile App.....	4
2.3.	Access to DSE-Mobile:.....	5
2.4.	Logging in .....	5
3.	Overview .....	6
3.1.	Quick Description .....	6
4.	Home.....	7
4.1.	Consulting Watchlists.....	7
4.2.	Switching views .....	8
4.3.	Indicative vs RFS tradeable price .....	9
4.4.	Searching for an Instrument .....	9
4.5.	Manage your Favorite’s Lists.....	10
4.6.	From Home to Instrument details.....	11
4.7.	Contextual menu and Dual screen mode.....	12
5.	Trade .....	14
5.1.	One-click Instant Trading .....	14
5.2.	Trading Popup Notifications.....	15
5.3.	Set your Default Trading Quantity .....	16
5.4.	Unlocking the POD to trade .....	17
5.5.	Place Resting orders.....	18
6.	The Trade Blotter .....	22
6.1.	Trade Blotter Overview .....	22
6.2.	Advanced filtering and search.....	23
7.	6. Account and Settings .....	24
7.1.	Portfolio .....	24
7.2.	Execution History .....	25
7.3.	Edit settings and Quantity shortcut buttons.....	26
7.4.	Credit Limit.....	27
7.5.	Log Out.....	27
8.	Self Service.....	28
8.1.	Password Reset .....	28
8.2.	Device Unregister .....	30
9.	Technical Issues .....	31

# 1. Introduction

Dhaka Stock Exchange (DSE) has implemented a Centralized Order Management System 'DSE-FlexTP' for the TREC holders of the exchange to manage their orders. The introduction of this technology has brought a new dimension of business opportunities in the capital market, and it is exciting to see the exchange embracing state-of-the-art technology to improve trading efficiency. The Mobile App (DSE-Mobile), is to leverage the DSE-FlexTP architecture to make trading available to investors from mobile device. This is connected investors to the state-of-the-art technology of trading. DSE-Mobile is being facilitated to bring new dimension of business opportunities in the capital market.

DSE-Mobile was introduced in March 2016 and has undergone regular updates to meet user needs and ensure compliance with security standards. The latest version, DSE-Mobile v2, was released in April 2023 with advanced features and utilizes the latest development frameworks to optimize usability and improve the user experience. The DSE-Mobile App provides real time Equities bid/ask quotes, Request for Streaming (RFS) trading capabilities, managing and monitoring resting orders in a secure mode, in synchronization with a Web HTML5 app for dealers at office. DSE-Mobile is a native mobile application for iOS and Android phones.

## 1.1. Features

Main features available in DSE-Mobile are:

- Real time market information and indicative bid/ask prices;
- Intuitive navigation menu;
- Customized favorite lists;
- Securities Listed in Different Indices (DSEX, DS30, DSMEX and ATBX);
- Historical and intraday Charts with technical indicators;
- Placement of instant orders via PODs;
- Placement of single leg LIMIT resting orders;
- Portfolio management with Real-time P&L;
- Tracking of executions;
- Order Blotter Filters;
- Biometric Authentication;
- Self-password reset and device un-register;



**DSE-FlexTP System** - *Information in this manual is general in nature. We recommend to seek independent financial advice and ensure you fully understand the risks involved before trading.*

## 2. Getting Started

### 2.1. Accessibility of DSE-Mobile

Three different accessibility in DSE-Mobile:

- **DSE-Mobile VIP** – Allows you to be aware of your portfolio and favorites without efforts, keep in touch with professional trader to get high-end services. Trader will professionally manage best execution of your orders.
- **DSE-Mobile Trader** – Allows you to be aware of your portfolio and favorites without efforts, keep in touch with professional trader to get high-end services while availing ability to manage orders yourself.
- **DSE-Mobile Biz Owner** – Allows business owner to be aware of activities of their broking business status. This is only for dealer account (Type D) of TREC holder.

The DSE-Investor is another platform allows trading available to investors from any web browser (Mobile, PC, Laptop, Tab etc.).

You will get features in DSE-Mobile app based on access rights set by the TRECs (Broker).

### 2.2. Install DSE-Mobile App

**Device Compatibility** - Minimum requirements to use the DSE-Mobile:

- **Android Device:** Minimum version of Android is 11 to get optimum features and all functionalities of DSE-Mobile. But user can install the App on Android 8.1 or later version subject to support by the Google Play.
- **iOS Device:** Minimum version of iOS is 13 to get optimum features and all functionalities of DSE-Mobile. But user can install the App on iOS 12 subject to support by the Apple App Store.
- Phone viewport size (screen resolution): over 350px
- Internet data connectivity: 4G or Wi-Fi

**Tips:** *To get optimum performance of real-time market information, you should ensure good quality of internet connection or network connectivity.*

## 2.3. Access to DSE-Mobile:

Contact your TRECs (Broker) for registration and subscription for your desired DSE Mobility product.

- Once your login has been created by your TREC (Broker), you will receive your credentials (login/password) by email (VIP, Trader and Biz Owner features are hosted on the same app)
- Click on the download link of the email, or search for “DSE Mobile” in the Google Play Store or Apple App Store
- Select the app and click on “Install”

**TIPS:** The app might prompt you to update it from time to time, although in most cases your phone will update it automatically. This is to ensure that you access all the latest features that are published.

## 2.4. Logging in

- Click on the DSE-Mobile icon installed onto your device Home screen.
- The login screen prompts you to enter your Username and Password.

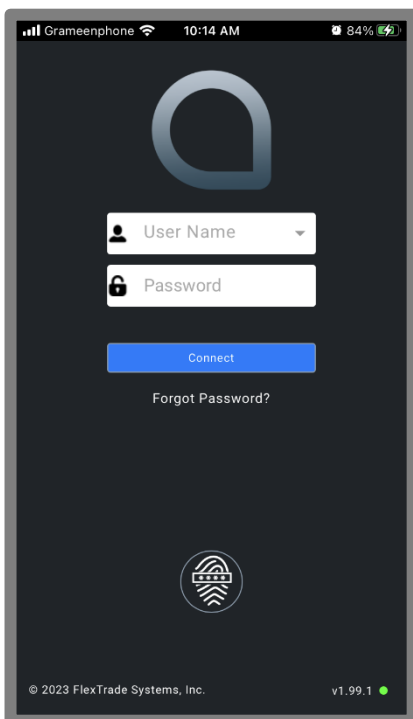





Figure - the Login page

 Login and password are provided by your TREC through email.

 Please contact your TREC IT desk for blocked access.

 Click on “Forgot Password” to reset your password.

## 3. Overview

Once you logged in, the landing page is as follows:

DSE Indices		Day Perf		
Ticker / Name	Last / Time	Var	Val / Vol	
DSMEX.XDSE DSMEX	1,276.72965 10:15:25	+2.98% 36.98458	0.000 0.000	
ATBX.XDSE ATBX	- -	- -	0.000 0.000	
DSEX.XDSE DSEX	6,218.31694 10:15:29	+0.12% 7.28934	0.000 0.000	
DS30.XDSE DS30	2,202.90251 10:15:26	+0.04% 0.86657	0.000 0.000	

Figure - the Home page

### 3.1. Quick Description



Figure - the NAVPAN

The **NAVPAN** or navigation panel placed at the bottom of the app allows navigation between all pages and access to filtering functions. It starts with the home button opening the Watchlists updated in real time.



#### Home

Access real time quotes on predefined lists and your customized favorites. Place instant orders using the **PODVIEW**.

**Account**

Access your Portfolio, Account details, Credit Limits, Customize preference in the App (Setting), or check the executions history.

**Order Blotter**

Access to your Order Blotter. The Order Blotter provides real time overview of orders placed, both originated from the mobile or desktop app.

**Alert notifications**

Go to this notification page to check your last trade executions.

**Search and filter**

Click on this icon to search for an instrument or apply filters on orders.

## 4. Home



This is the default landing page providing market overview. It allows real-time bid/ask market monitoring and fast order placement. You can configure/customize up to 3 **FAV** favorite lists of instruments.

### 4.1. Consulting Watchlists

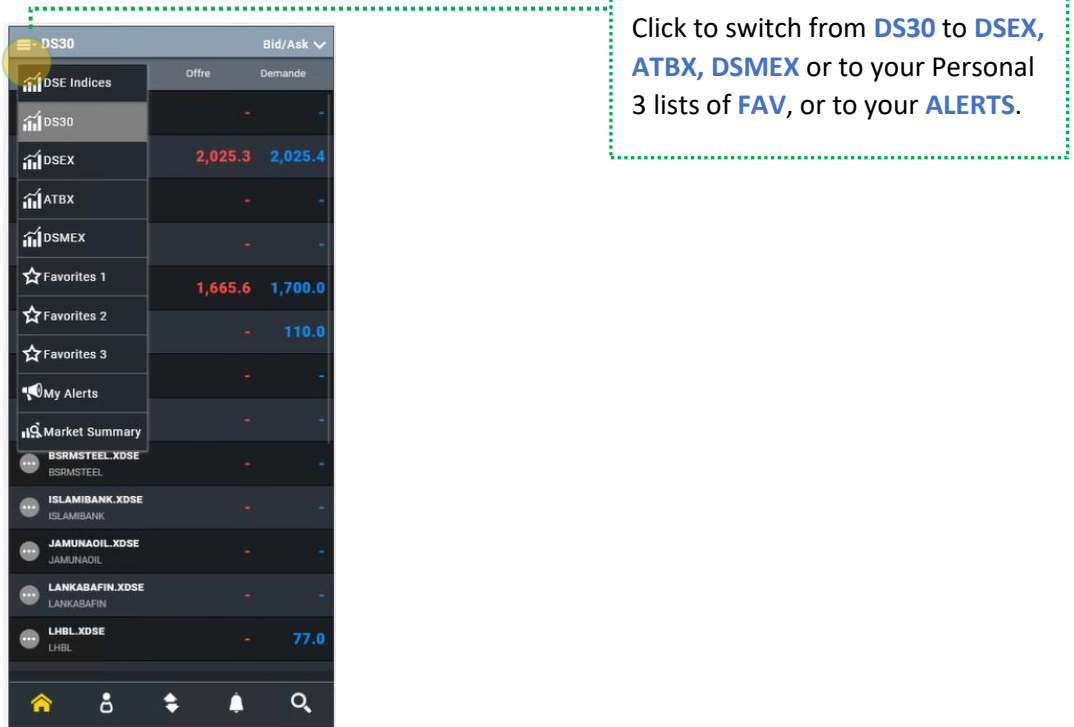
Fast access is key to any winning strategy. The **HOME** screen is a highly customizable quoting dashboard to suit your preferences. It brings you to the Default Watchlist – **Majors**. You can change it using the **RIBBON** menu. It will display the Real-time bid/ask quotes for the selected list of your choice.



Figure - the RIBBON

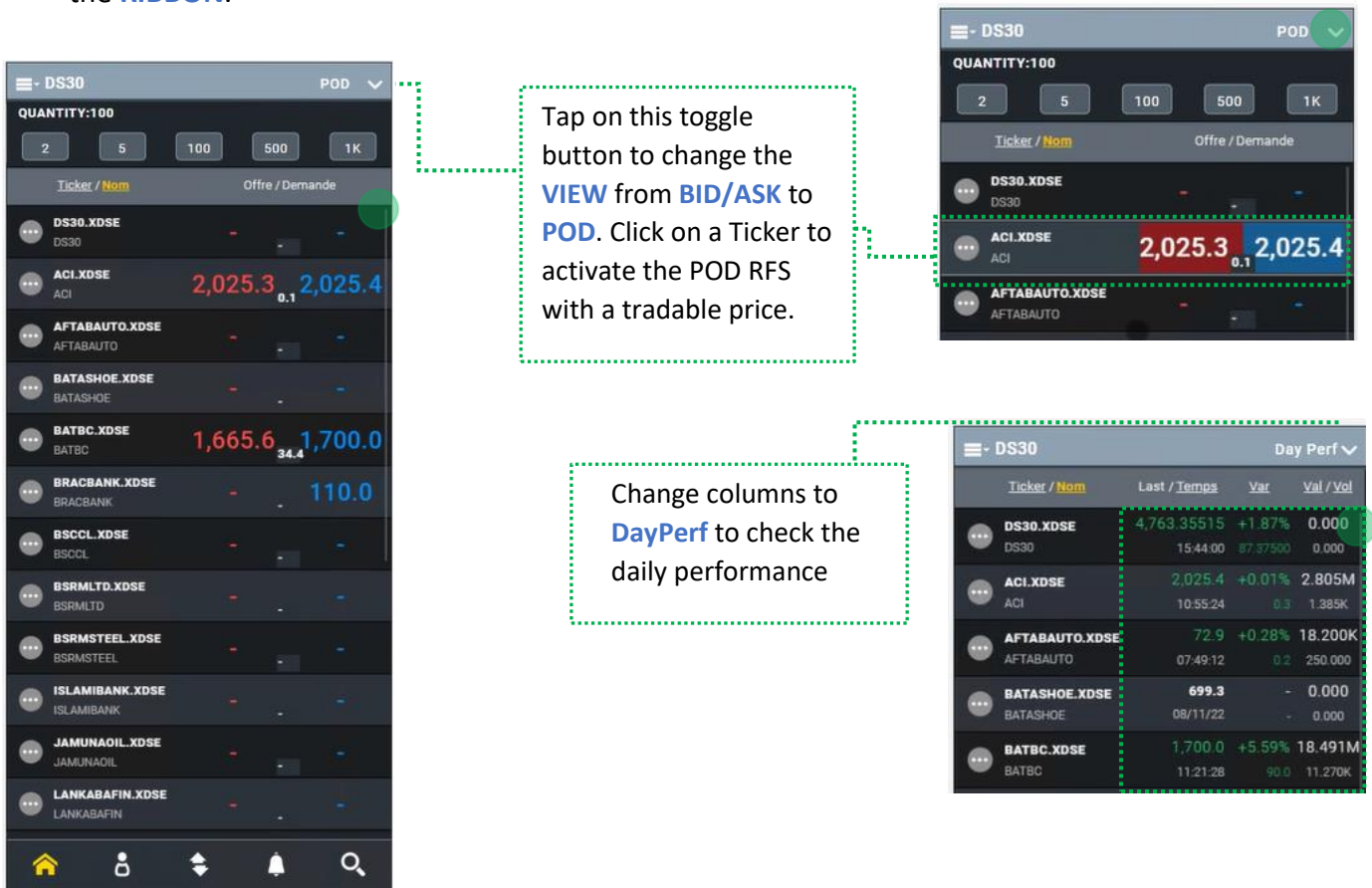
Use this top **RIBBON** to select other watchlists and/or change views:

- Left side opens the **MENU** of available lists.
- Right side opens the different **VIEWS**.



## 4.2. Switching views

You can also change the columns applied to your selected list, by clicking on the right side of the **RIBBON**.





### 4.3. Indicative vs RFS tradeable price

By default, MOGO is displaying indicative Bid & Ask quotes on all watchlists.

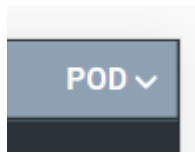


Figure - the PODVIEW

Switch to the **PODVIEW** from the right side of the **RIBBON**, then select the instrument you want to trade on to activate a **tradeable bid & ask price**, valid for 20 seconds. [Go the Trade section for more details.](#)

### 4.4. Searching for an Instrument



In the **HOME** page, use the quick search to find a currency pair not available the current displayed list

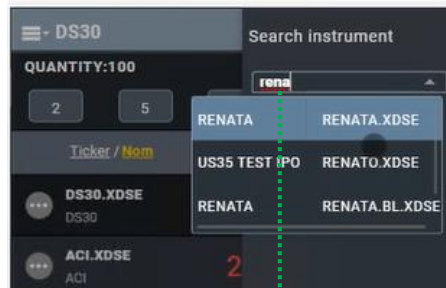


Figure - Search an instrument

Type few letters and results will be shown on corresponding tickers and/or name.

## 4.5. Manage your Favorite's Lists

With your DSE-Mobile app, you can manage 3 individual customizable watchlists of instruments. You have multiple ways to create/enrich a **FAV** list.

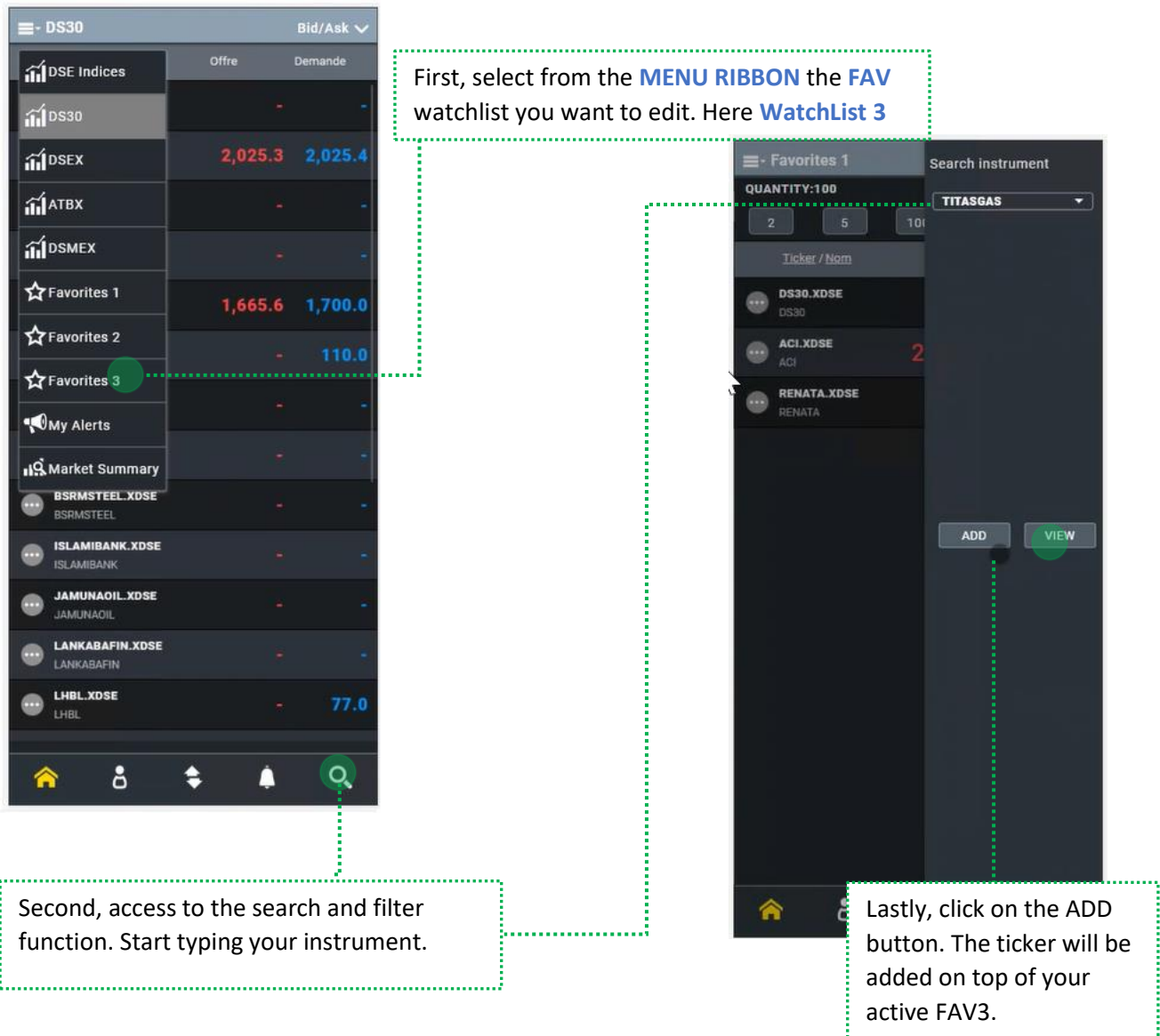


Figure - Add a ticker to a favorite list

**TIPS:** Your 3 personal watchlists are synchronized with the web desktop app accessible at the office. From that desktop you can also administrate your Favorite lists easily by transforming a composite list into a FAV.

## 4.6. From Home to Instrument details

Click on a Ticker to go to its details.

The **INSTRUMENT DETAIL** displays market context, intraday chart, and pods

Click on the arrow to display full screen chart. Click again on the arrow to reduce it.

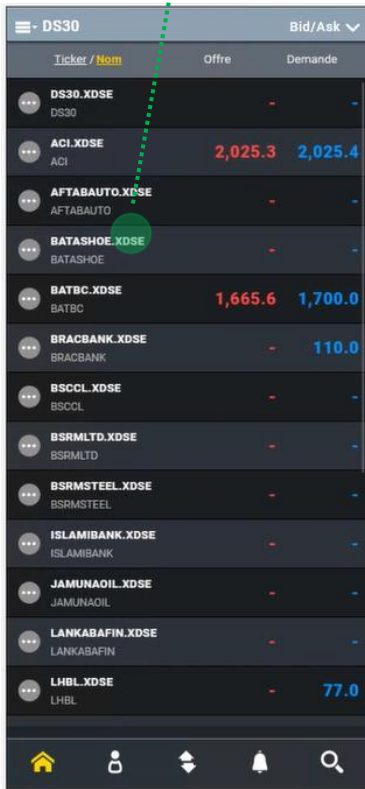


Figure - The instrument details

**TIPS:** To go BACK, just tap on the HOME icon again.



Tilt your device horizontally to display the chart in full screen.

On the full screen **CHART**, select from the list of type, periods and indicators to change the display.



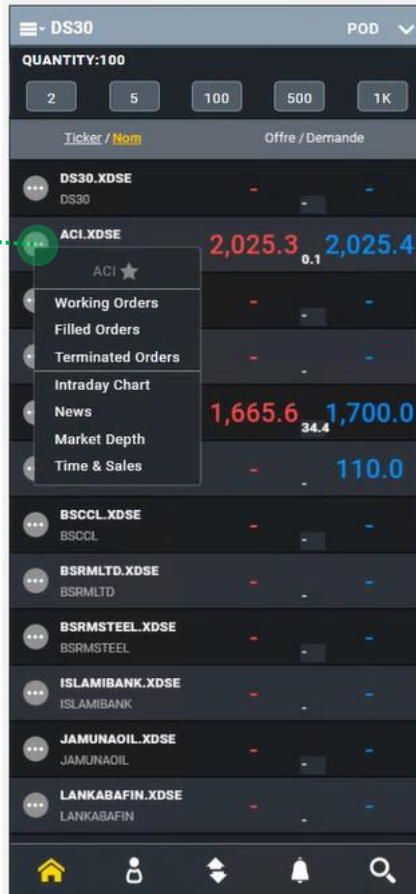
Figure - full enlarged chart

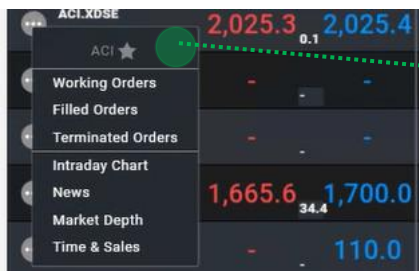
**TIPS:** No need to use your phone's back button. The **NAVPAN** is back mechanism.



#### 4.7. Contextual menu and Dual screen mode

Click on the 3 dots icon in front of any ticker to activate it contextual menu.





A contextual shortcut menu appears, giving access to the dual screen.

Select the entry of your choice: filled orders for example,

Or chart to get the corresponding intraday candles.

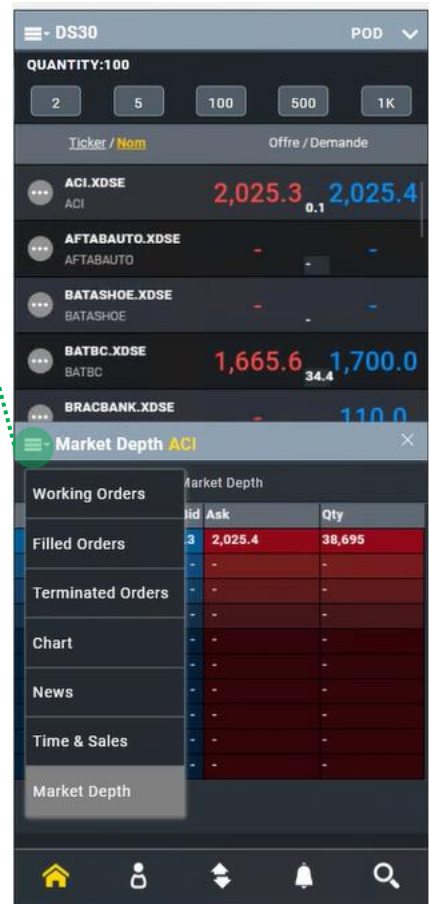
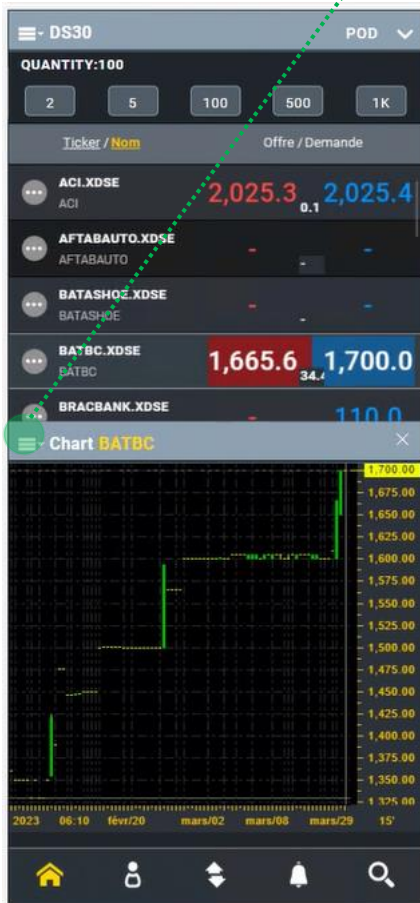


Figure - Contextual menu & dual screen

## 5. Trade



### 5.1. One-click Instant Trading

From the **Home** page or from the **instrument details**, you can tradeable price valid for 20 seconds. Once the POD is activated, you can trade in one-click.

#### 1-Switch to **PODVIEW**.

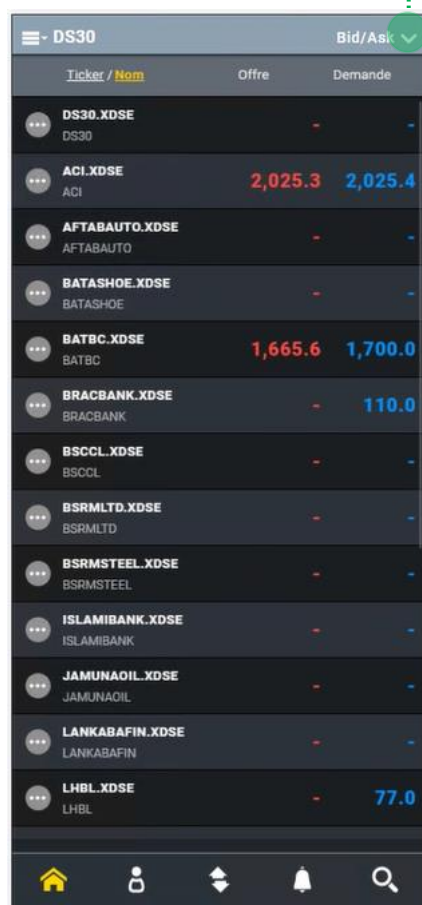
The watchlist can be displayed in either BID/ASK mode or **POD**.

Just tap on this icon to switch to **POD** mode.

#### 2-Select the instrument and Trade.

Click on the indicative B&A of any instrument to activate a tradeable POD.

**TIPS:** tapping on the ticker name will take you to Instrument details.



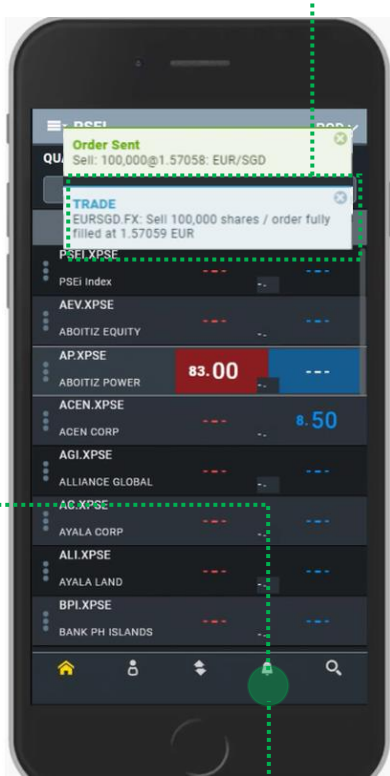
Trade by tapping on any side. The quantity is set by default with the quantity buttons.

Figure - Instant trade from POD View

## 5.2. Trading Popup Notifications



A market order is placed instantly, and a notification message appears during 3 sec.



When the trade has been executed, you will be promptly notified so you won't need to check your Notifications page constantly.

You can view All Notifications in the notifications page by clicking here

A numbered icon will also count that there are notifications

**TIPS:** The POD is active for 20 seconds. Then, the watchlist will switch back to indicative quotes. This is a security to prevent from accidental trades, since this one-click trade is instantaneous.

### 5.3. Set your Default Trading Quantity

Shortcut buttons are available to set the **DEFAULT QUANTITY (DQTY)** that will be used by default to trade instantly from the watchlists of your **HOME** and in the **PODVIEW**.

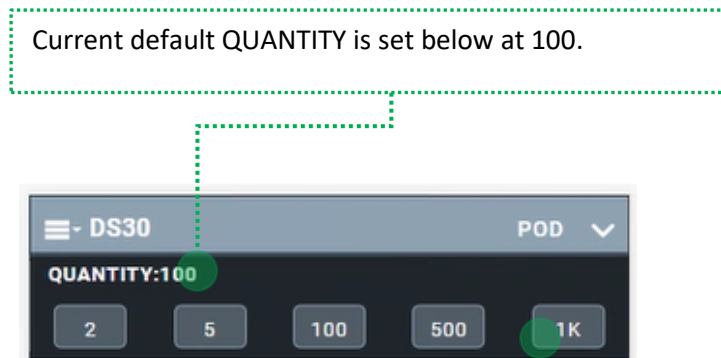


Figure - Default quantity & its button shortcuts

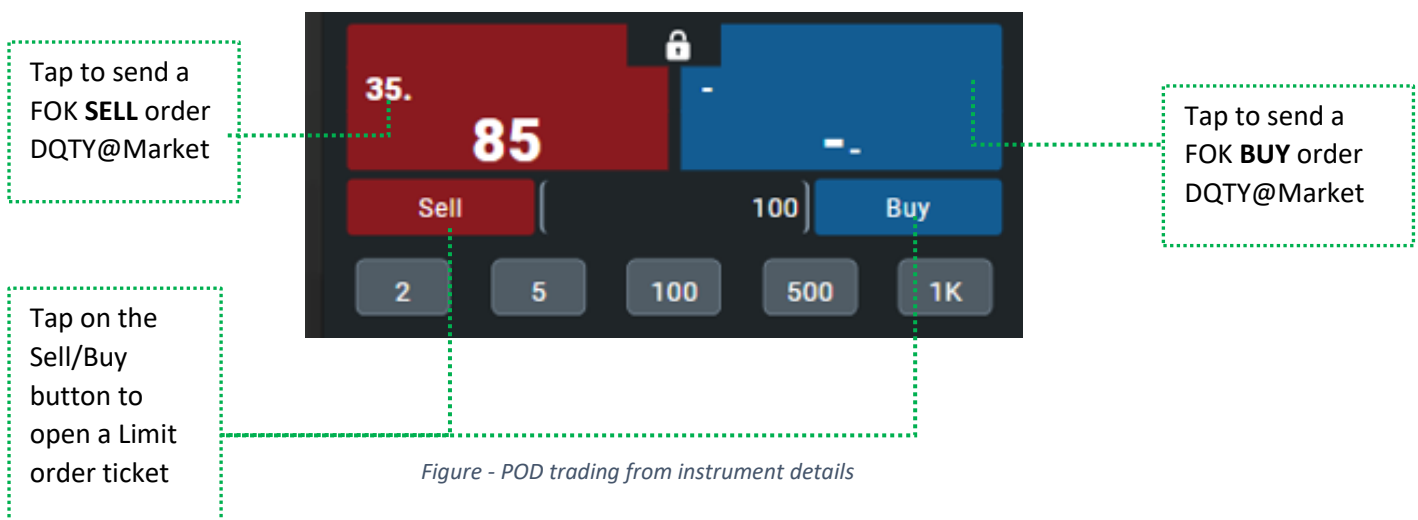
Buttons are cumulative use multiple clicks to set your preferred amount as follows:

- One click on 100, then one click on 500 will set 600
- 3 consecutive clicks on 500 will set 1,500
- All combinations are possible mixing buttons

**One long press** on any button will reset the default quantity to the amount of the selected button.

Once your **DQTY** is set, it will be prefilled in all trading tickets and PODs.

This **DQTY** and its button shortcuts are also accessible from the POD of the **Instrument details**.







## 5.4. Unlocking the POD to trade

From the **HOME** page, in the **B/A view**, tap on a ticker name will open **the instrument details**. From this page you can activate an RFS tradeable price and place an instant FOK market order.

In HOME, from Bid/Ask View, tap on any NAME in your watchlist to go to the selected instrument details page.



Tap on the LOCK to activate an RFS. Once you see pip difference in place of the lock, **the POD is unlocked**. **You can trade.**



Tap to send a **SELL** or **BUY** once the POD is unlocked.

Pip spread indicates an RFS quote is active. You may click on Buy and Sell to trade during 20 sec. If Lock is ON in place of pip spread the RFS quote has expired.



**Lock is ON.** This is an indicative quote, cannot trade. Click on Bid or Ask will not trigger a trade.



**No Lock.** This is an RFS, which stays active during 20 sec. Tap on any side will trigger an instant FOK order.

## 5.5. Place Resting orders

From the **HOME** page, in the **B/A view**, tap on a price to open a Limit order ticket.

1-Open a Limit ticket from the HOME Watchlist.

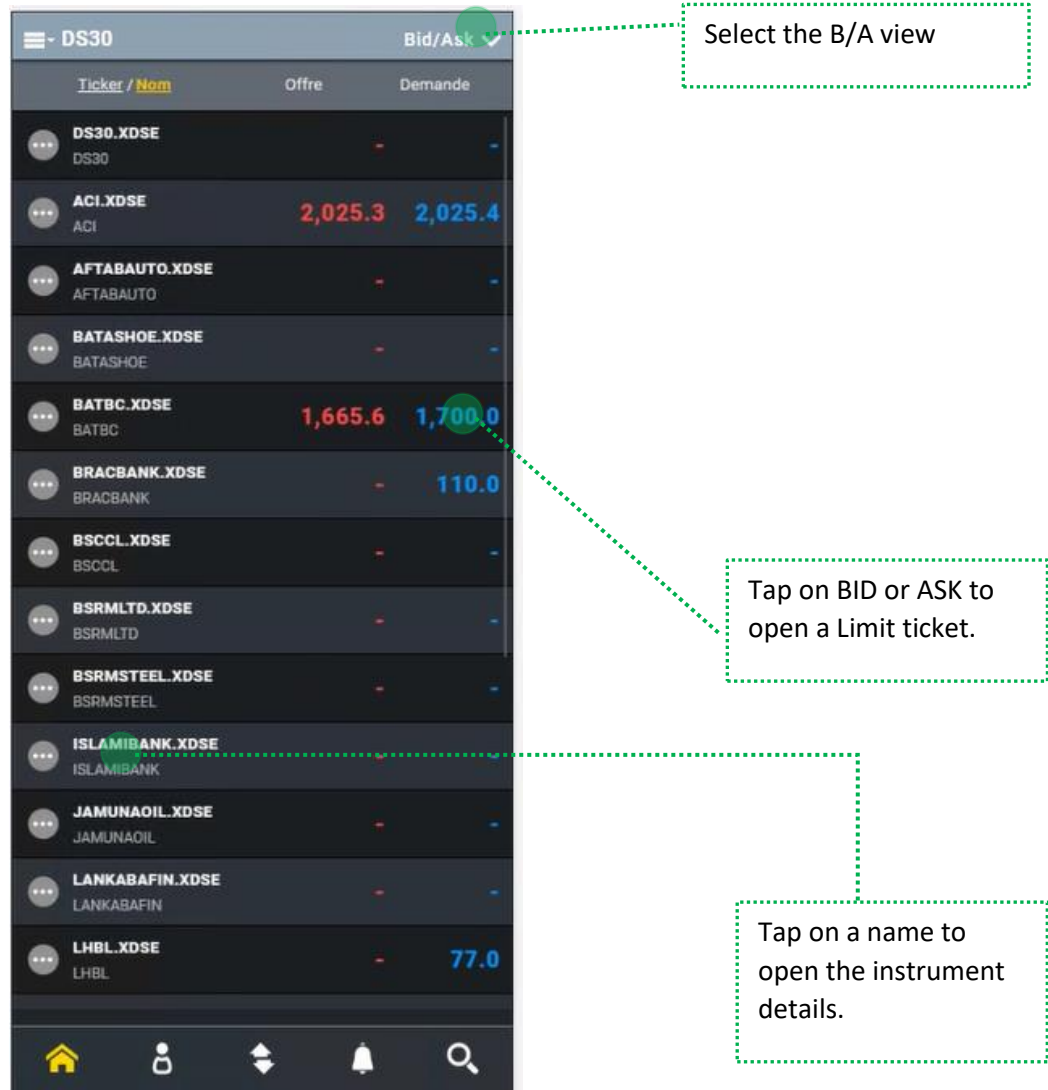


Figure - The BID & ASK view

2-Fill-out the details by just tapping on the buttons. No keyboard needed!

The screenshot shows the order placement interface for 'Buy' of 'ACI.XDSE'. The interface includes a quantity field (20), validity (Day), order type (Limit), limit price (2025.4), and a value of BDT 40,508.00. A 'PREVIEW ORDER' button is highlighted. The market data shows a bid of 2025.3 and an ask of 2025.4.

**Callout 1:** Tap the arrows to reverse the Order type (e.g., Buy to Sell)

**Callout 2:** Tap to change to the Order type

**Callout 3:** Set your QUANTITY  
The **DQTY** is prefilled.  
To change it, use the buttons. Tap 1 or x times to reach the number you want (e.g., tap 3x on 500K to get 1.5M).

**Callout 4:** Use the -/+ to adjust the price

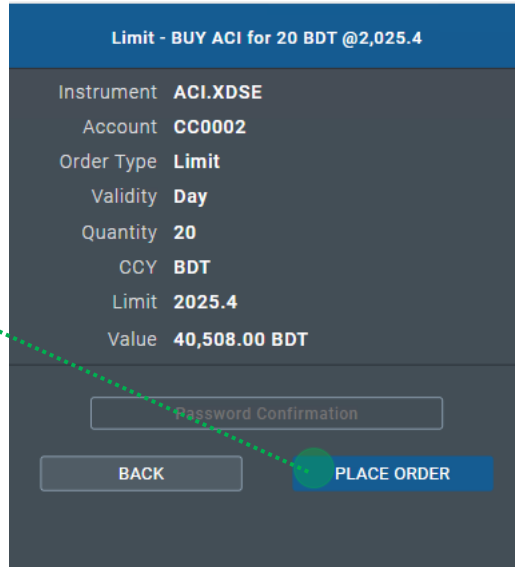
**Callout 5:** Tap to review order before sending

**Callout 6:** PRICE: market price is prefilled by default

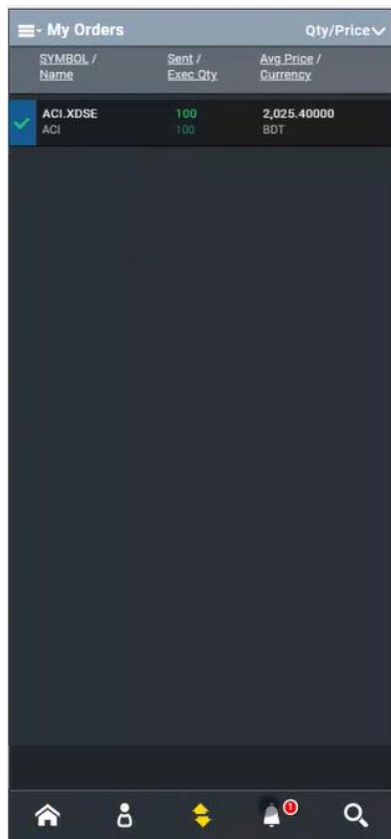
Figure - Order placement

### 3-Confirm and send your order

Check your order placement details.  
Then, tap to send the order.



### 4-Monitor your order in the Order Blotter



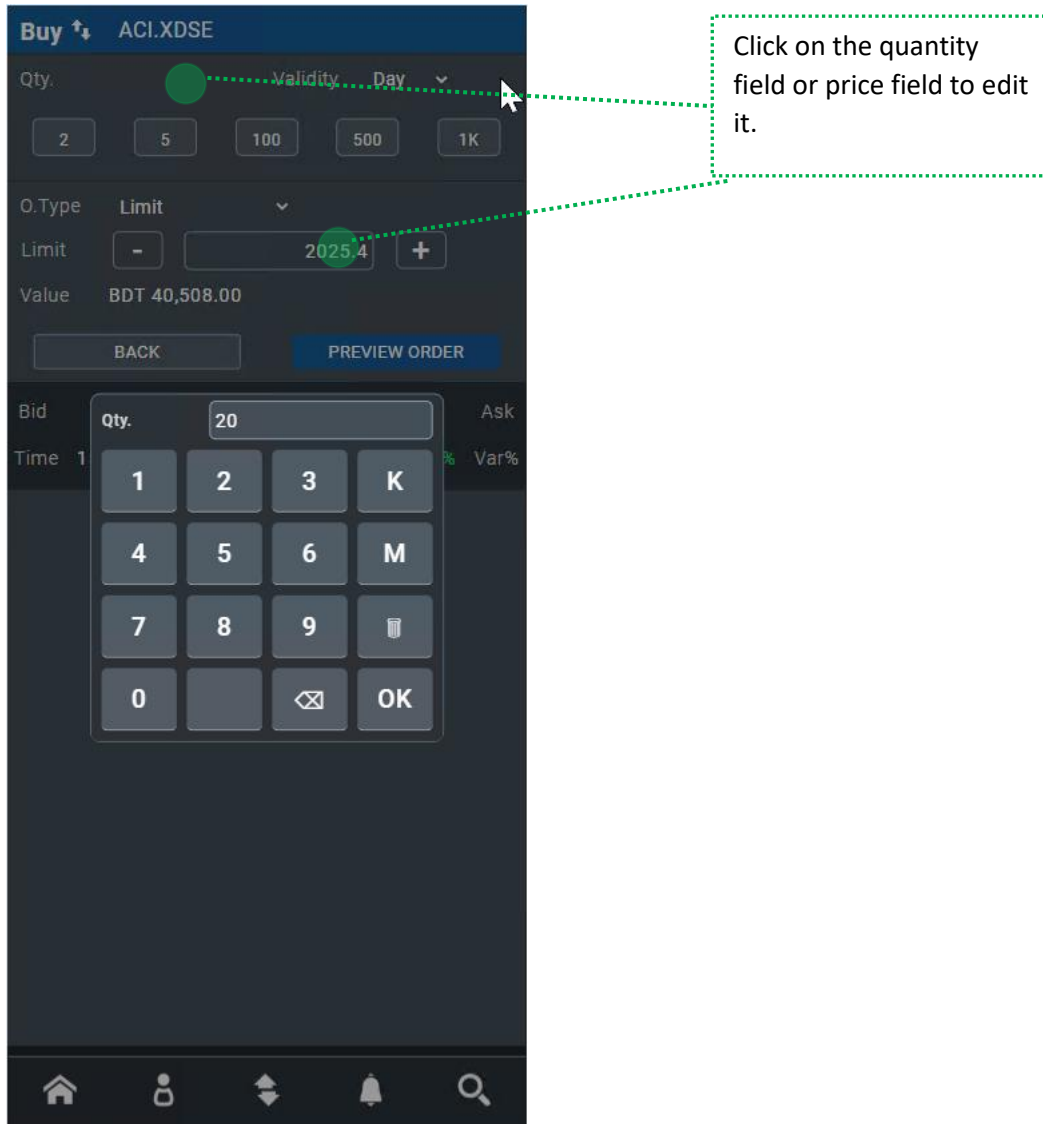
Blue icon for BUY  
Red icon for SELL

Once your order is sent, the Order Blotter page will open automatically. Your last order will be on top of the list.

Symbols	Meaning
	Working
	Fully Filled
	Canceled or Rejected
	Replaced
	Pending

Figure - The Order blotter

## 5- Enter a specific quantity or price with the keyboard



## 6. The Trade Blotter

### 6.1. Trade Blotter Overview

The Trade Blotter is a table that provides different views to monitor your orders:

View all orders, cancel, modify natural orders, and Activate/deactivate unsolicited orders.

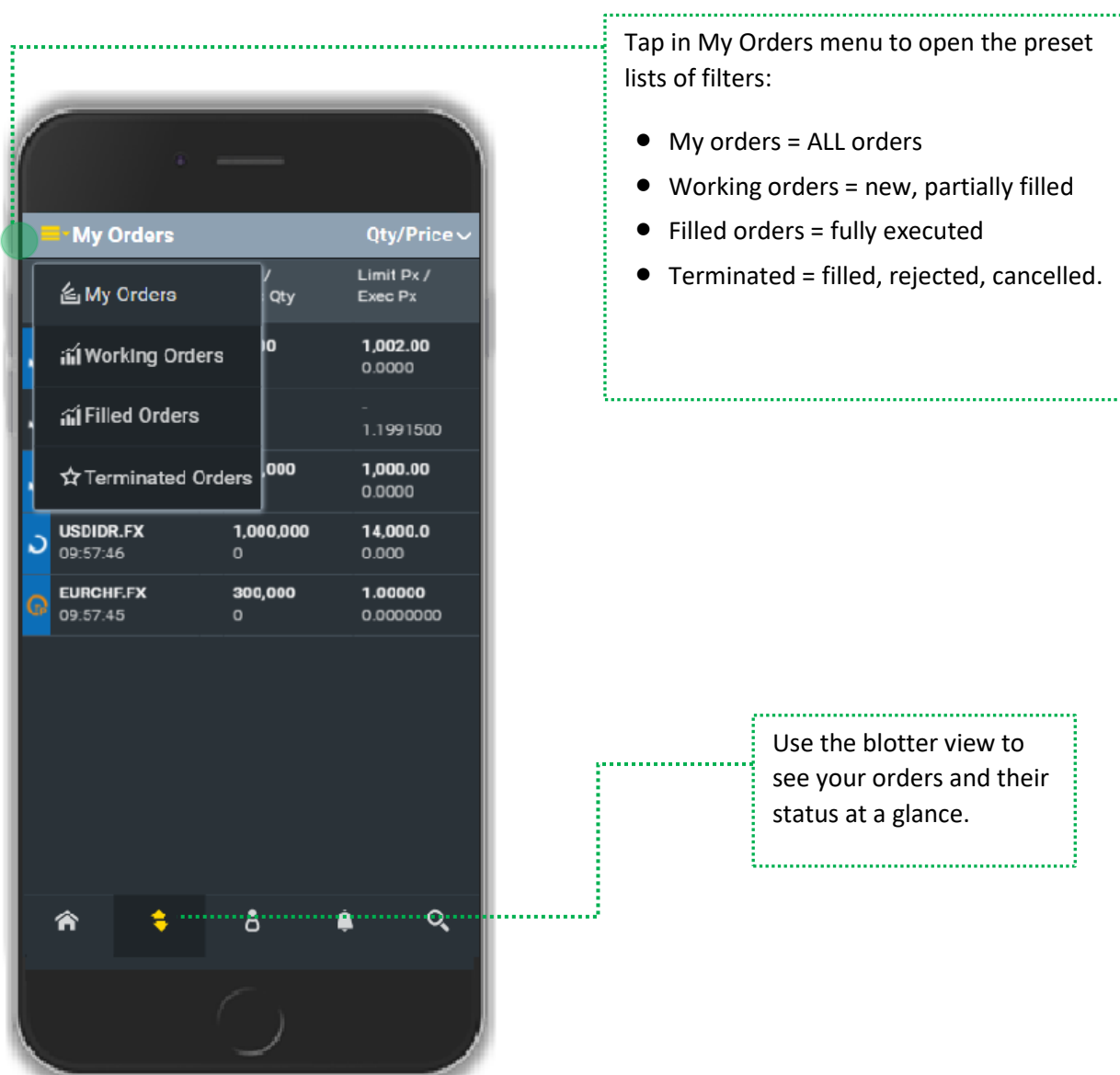


Figure - The trade blotter overview

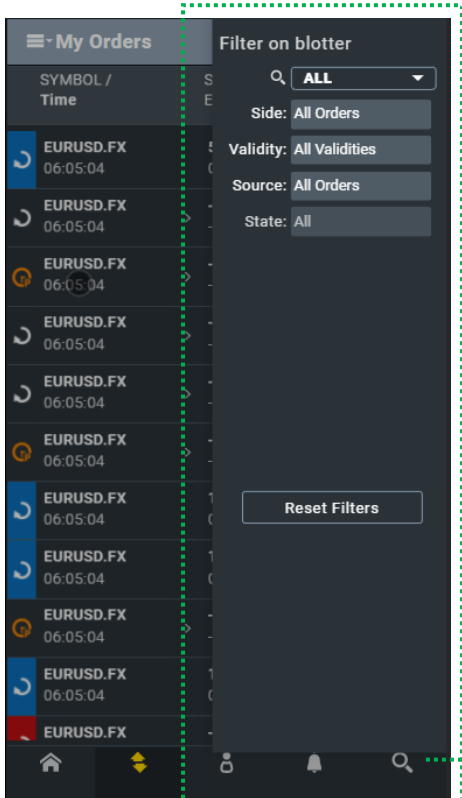
**TIPS:** *Swipe with your finger from right to left on the blotter to pass onto the next columns*

## 6.2. Advanced filtering and search

Tap on the search lens from the NAVPAN to open the advanced search and filtering menu.



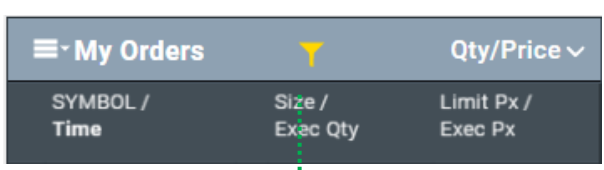
From the Blotter page, tap on search icon opens the advanced filtering.



You can filter by:

- Ticker
- Side: Buy or sell
- Validity: DAY

This filtering icon will appear on the Blotter ribbon if an advanced filter is applied.



## 7.6. Account and Settings



### 7.1. Portfolio

In the Account page, you can check the positions opened during the day and review your back-office operations such as cash withdrawal or cash deposit.

#### Portfolio view

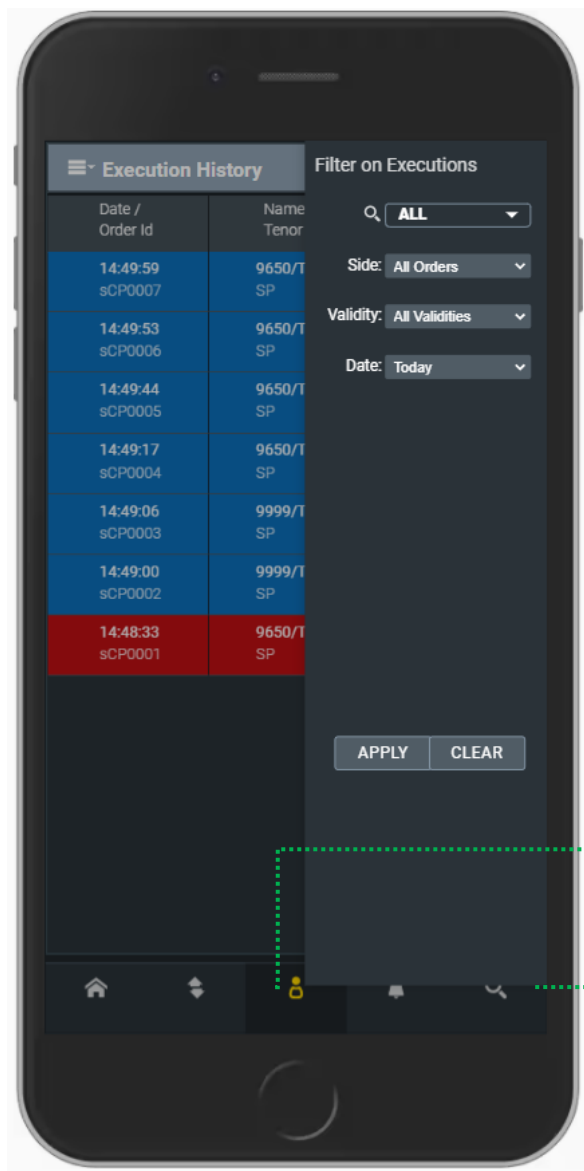
Portfolio		Value	Gain
Portfolio	Value		
CC0002	33,021,733,860.00		+315652.10%
	BDT	33,011,275,740.00	
Ticker / Name	Value / Cost	Weight%	
<b>ACI.XDSE</b>	<b>10,329,030</b>	0.03%	
ACI	143,820		
<b>AIL.XDSE</b>	<b>234,600</b>	0.00%	
AIL	143,820		
<b>NATLIFEINS.XDSE</b>	<b>1,470,150</b>	0.00%	
NATLIFEINS	1,251,800		
<b>OLYMPIC.XDSE</b>	<b>1,050,920</b>	0.00%	
OLYMPIC	1,164,800		
<b>ORIONPHARM.XDSE</b>	<b>346,800</b>	0.00%	
ORIONPHARM	275,910		
<b>PUBALIBANK.XDSE</b>	<b>116,280</b>	0.00%	
PUBALIBANK	132,600		
<b>RENATA.XDSE</b>	<b>6,095,000</b>	0.02%	
RENATA	5,092,240		
<b>SQURPHARMA.XDSE</b>	<b>1,600,600</b>	0.00%	
SQURPHARMA	1,232,250		
<b>SUMITPOWER.XDSE</b>	<b>220,480</b>	0.00%	
SUMITPOWER	224,720		
<b>TITASGAS.XDSE</b>	<b>33,000,000,000</b>	99.93%	
TITASGAS	402,500		
<b>UNIQUEHRL.XDSE</b>	<b>270,000</b>	0.00%	
UNIQUEHRL	393,660		

#### P&L view

Within the Portfolio Menu, you can also display the P&L of your positions opened intraday and check the credit details if your account is entitled with margin trading for example.



## 7.2. Execution History



From the Account page, tap on search icon opens the advanced filtering.

### 7.3. Edit settings and Quantity shortcut buttons

From Ribbon of the account page, go to the settings menu to edit your settings and save your preferred homepage.

#### Customize what you want to see in your Homepage

Tap on the shortcut quantity buttons to define their values

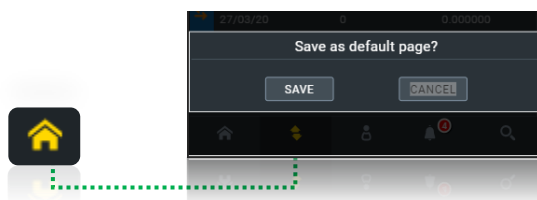
Select your landing page

Select your preferred views/theme

Open the settings menu to Customize your preferences.

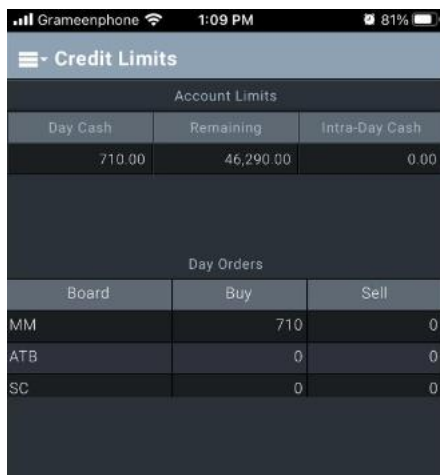
#### Save your default landing page after login

**TIPS:** Long press on the Home icon to save your current watchlist and view as your preferred Home.



## 7.4. Credit Limit

Go to the account page – tap **Credit Limit** to see your cash balance



The screenshot shows the 'Credit Limits' page on a mobile app. The status bar at the top indicates 'Grameenphone', signal strength, Wi-Fi, time '1:09 PM', and battery '81%'. The page title is 'Credit Limits'. Below the title is a section for 'Account Limits' with a table showing 'Day Cash' (710.00), 'Remaining' (46,290.00), and 'Intra-Day Cash' (0.00). Below that is a section for 'Day Orders' with a table showing 'Board', 'Buy', and 'Sell' columns. The data rows are: MM (Buy: 710, Sell: 0), ATB (Buy: 0, Sell: 0), and SC (Buy: 0, Sell: 0).

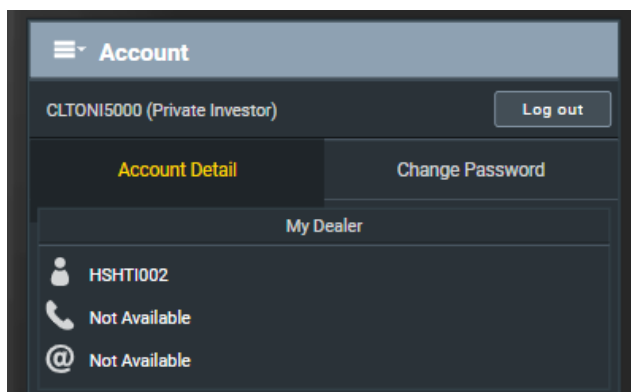
Account Limits		
Day Cash	Remaining	Intra-Day Cash
710.00	46,290.00	0.00

Day Orders		
Board	Buy	Sell
MM	710	0
ATB	0	0
SC	0	0

## 7.5. Log Out

Go to the account page – tap **Log Out**.

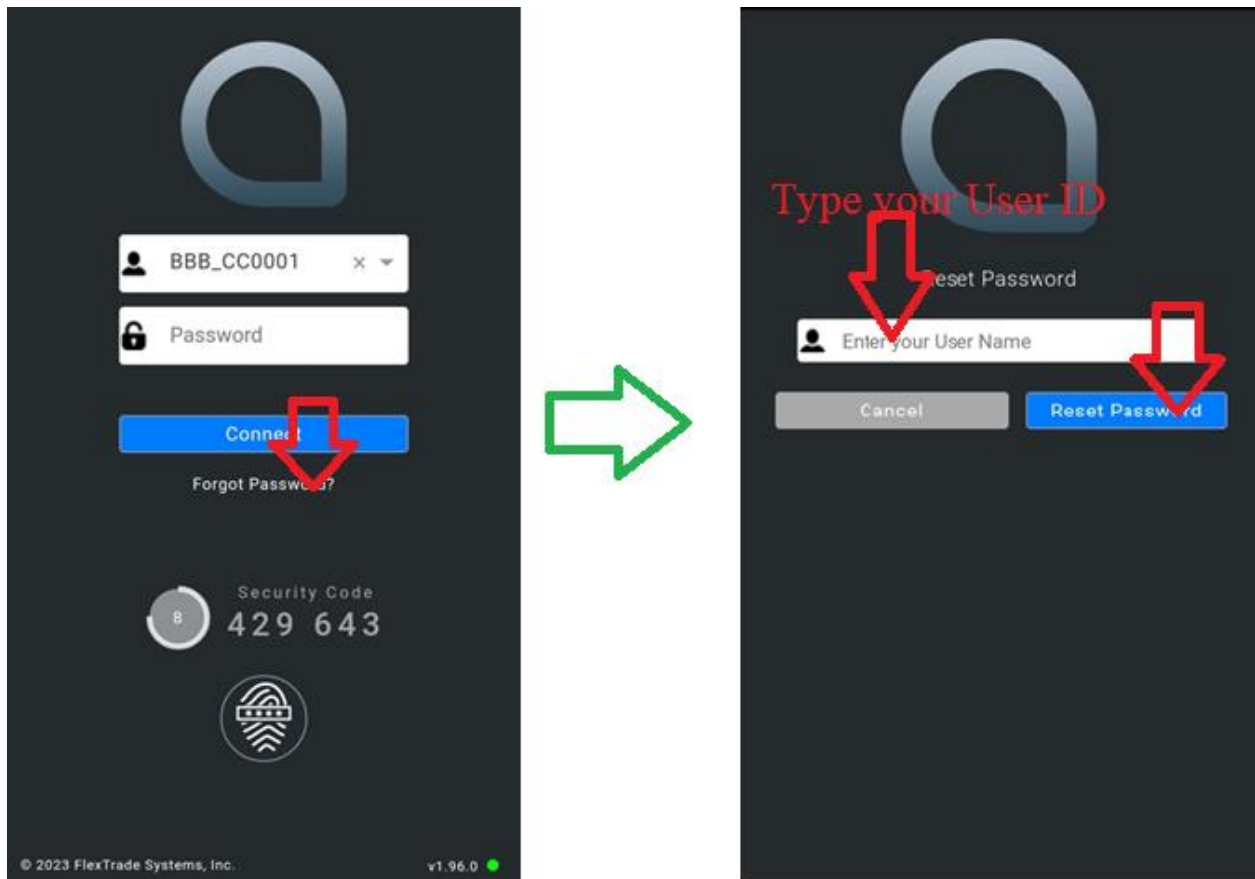


## 8. Self Service

### 8.1. Password Reset

You can reset the password in any case. Following is the steps:

1. On the login screen, tap on the “forgot Password” then type User ID and tap to the “Reset Password”.



2. An email will send your registered email with password reset link. This email is valid for one hour. Clicking on the “Reset your password” link and a new page will open


3. Type New Password and New Confirm Password (both must be same. You should follow the password policy to set new password.

Dear client CC0001 of BBBTRDR001,

You recently asked us to reset the password for your trading account.

Click this link to proceed with password change:  
[Reset your password](#)

The link will be valid for 1 hour.  
 After you signed-in, please follow instructions to create a new password.  
 If you did not request to change the password, please contact your broker.



**Type New and confirm Password**

Reset password

Reset password for login: BBB\_CC0001

Reset Password

**Password policy**

- Must be at least 6 character(s)
- Must contain at least 1 upper character, 1 lower character, 1 digit and 1 special character among !@#\$%^&\*+,-?\_
- Must not be identical to the User Name
- Must be different from the last 1 password(s)
- Characters allowed for password are: A-Z a-z 0-9 ! @ # \$ % ^ & \* + , - ? \_
- Password is case-sensitive

*Moreover, you can also request your TREC's (Broker)IT officer to reset your password.*

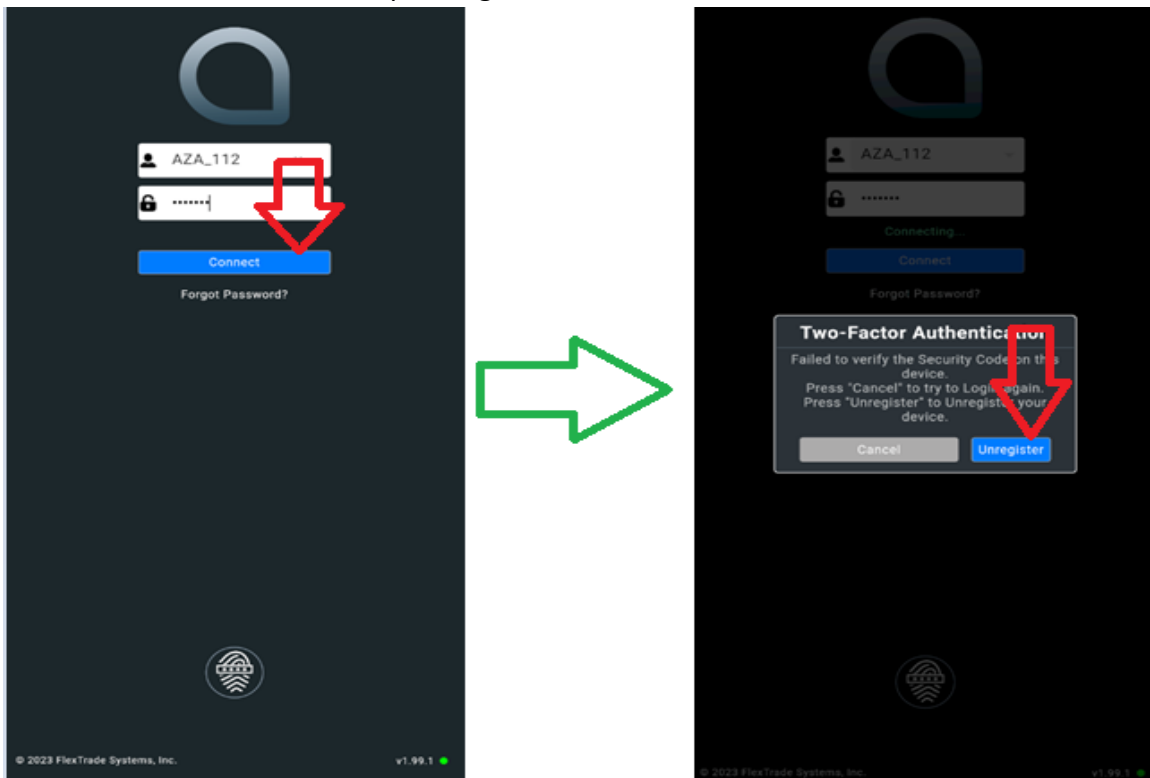
## 8.2. Device Unregister

It's need to unregister the device in following cases:

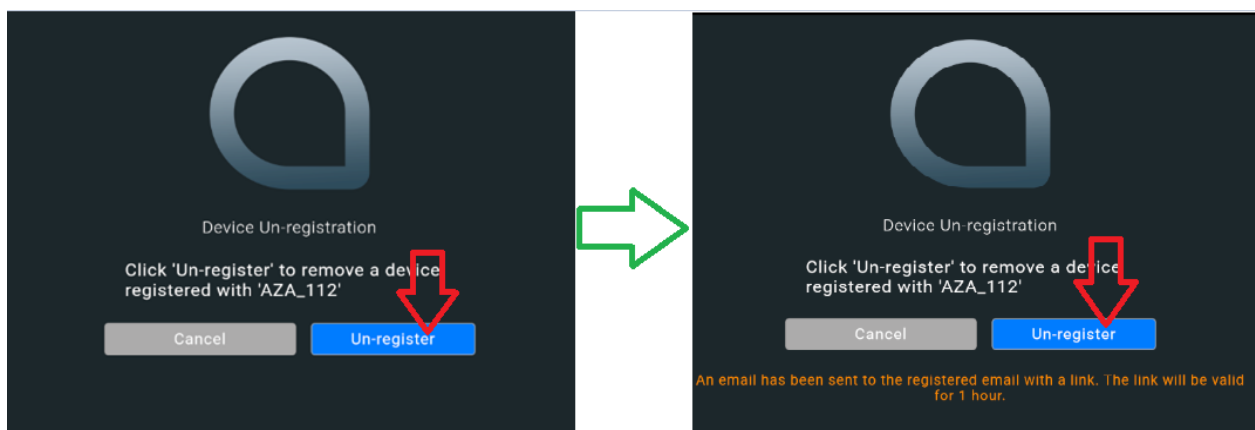
- Reinstall the DSE-Mobile app;
- Changing the Mobile device;
- Cleared the cache for DSE-Mobile App;

You can unregister the device by following steps:

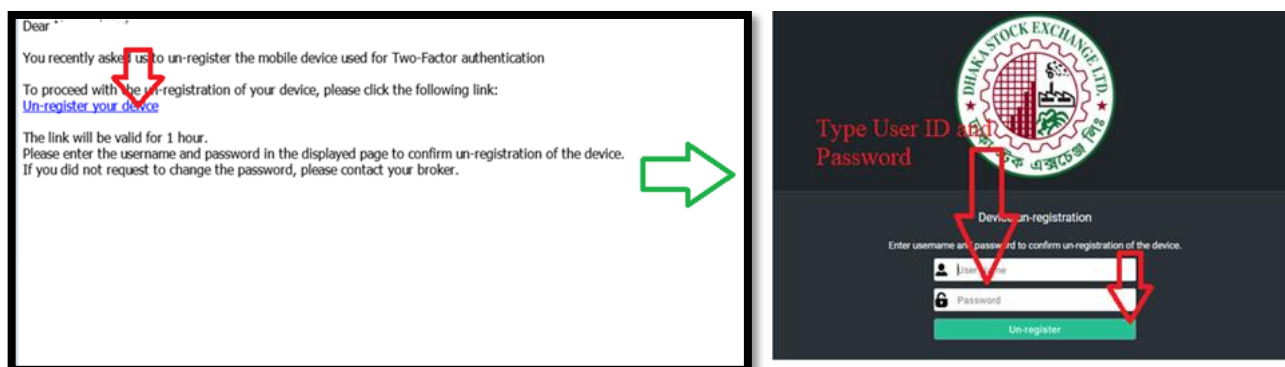
1. In login screen, put login Id and Password. Tap on the Connect, it will prompt "Two-Factor Authentication" and tap Unregister.



2. An email will send your registered email with the link "Un-register your device". This email is valid for one hour.



3. Clicking on the link “Un-register your device” from email. A new page will open and type User ID and password, click unregister



4. Open the DSE-Mobile and login.

**Moreover, you can also request your TRECs (Broker)IT officer to unregister the device.**

## 9. Technical Issues

For any technical issue please contact your TRECs (Broker)IT officer. You may report any to DSE through the Facebook page <https://web.facebook.com/DSEMobileInvestor/>

For any clarification on trading functions, portfolio data and other business terms, please contact your trader.